

CAGE WORKS

"WHEN IN DOUBT - CAGE IT"



Represented By:

PIR Sales, Inc.

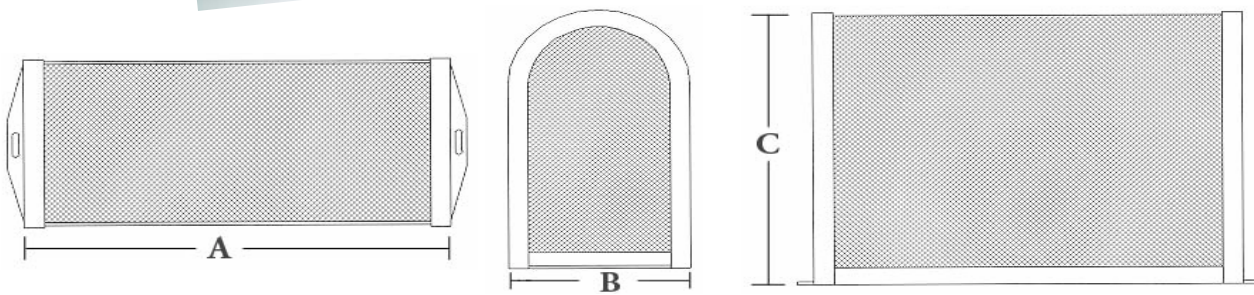
3050 N. San Marcos Pl.

Chandler, AZ. 85225

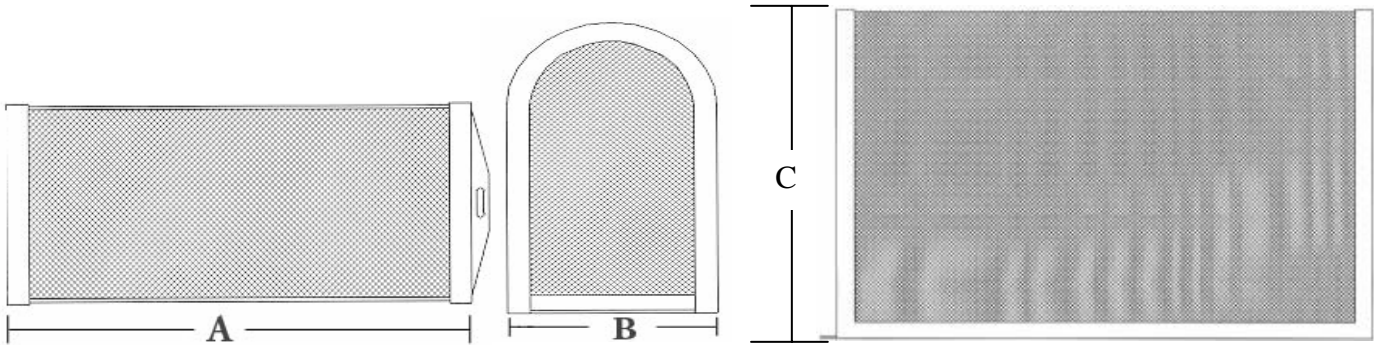
Phone- 480-892-6000 Fax- 480-892-6096

CAGE WORKS

specifications



Models: CWA5 to CWA20



Model: CWA40

Model	A Dimension	B Dimension	C Dimension	Access style
CWA5	12"	13.5"	17.75"	Lift Off
CWA10	24"	13.5"	24"	Lift Off
CWA15	24"	13.5"	30"	Lift Off
CWA20	32"	13.5"	24"	Lift Off
CWA40	48"	18"	30"	Slide Lock

CAGE WORKS

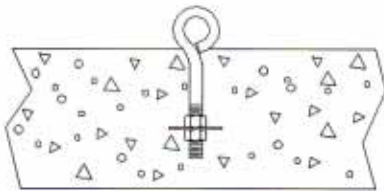
specifications

- All angle iron to be 1-1/2" x 1-1/2" x 1/8" hot rolled and shall be A.S.T.M. A36.
- Expanded metal shall be 1/2" spaced, #13 gauge flattened diamond pattern steel There shall be no exposed ends of expanded metal on the outside of the enclosure.
- Expanded metal shall be die-formed" for uniformity.
- Welding shall be a minimum of 1/4" long weld on 4" spacing.
- All mounting brackets are permanently welded in place
- All corners of the enclosure shall be formed by using angle iron to a 6" radius. All hardware shall be included and securely attached to each enclosure.
- All sizes shall withstand a minimum of 200 lbs. per square foot for 24 hours without deflection or distortion.
- Pre-Powder Coat Process– Grit (Sand) blast to remove mil scale.
- Powder Coat Process– Apply powder electro-statically at a 4-6 mil thickness. Cure at 400 degrees.

CAGE WORKS

specifications

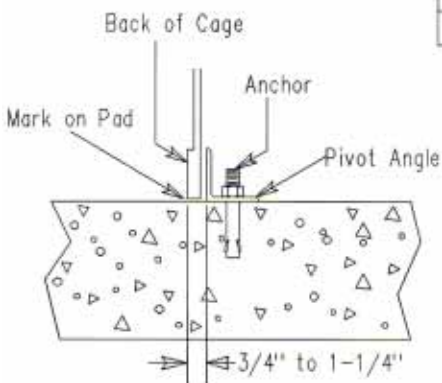
EYELET ANCHOR



WHEN USED WITH:

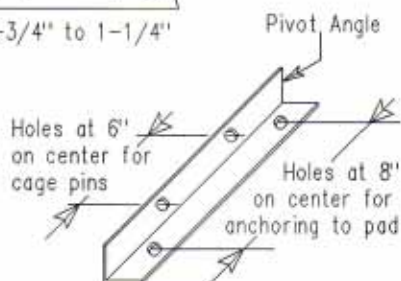
Model	Req'd
CWA5	2
CWA10	2
CWA20	2
CWA10A	1
CWA20A	1
CWA40	1

PIVOT ANCHOR



WHEN USED WITH:

Model	Req'd
CWA10A	1
CWA20A	1
CWA40	1



INSTALLATION:

Adjust nuts so that washer is about 1-1/2" to 2-1/2" below loop on eye bolt. (nuts need only be hand tight.)

While concrete is still wet, insert eye bolt assembly in until bottom of loop is at top of concrete.

NOTE: On cages with double lock down, eyelets are placed at dimension shown on drawing.

After concrete sets up, place cage over eye bolt loop(s)

On double loop cage, secure with padlocks to finish,

On pivot anchor cage, mark back edge of cage. Move cage out of the way. Measure 3/4"

to 1-1/4" inside of mark. Place angle pivot on ground with bolt holes to the inside. Mark anchor holes for drilling. Move pivot

angle and drill holes for anchors. Insert tamp in anchors and bolt pivot angle to concrete pad.

Align pivot pins on inside of cage with holes in angle. Slide cage forward until lock loop drops over eyelet. Secure with padlock.

Align pivot pins on inside of cage with holes in angle. Slide cage forward until lock loop drops over eyelet. Secure with padlock.

Align pivot pins on inside of cage with holes in angle. Slide cage forward until lock loop drops over eyelet. Secure with padlock.

Align pivot pins on inside of cage with holes in angle. Slide cage forward until lock loop drops over eyelet. Secure with padlock.